

Fii Projects Status Update

Smart Manufacturing Center (SMC)

High Performance Computing Data Center (HPCDC)

December 2020





SMC CONSTRUCTION STATUS UPDATE

- ▶ Continue paint and drywalling within the facility
- ▶ Complete carpeting on the first floor in the clinic space and continue polishing concrete in the engineering labs and front vestibule
- ▶ Begin start-up of air handling equipment
- ▶ Begin and complete installation of green wall and wall tile in the cafeteria
- ▶ Finish installation of epoxy flooring in L6 area and engineering lab
- ▶ Begin installation of reception and interior signage
- ▶ Complete landscaping on exterior of building
- ▶ Excavation of earthwork for bump-out on exterior of building
- ▶ Architectural punch lists begins
- ▶ Owner furniture begins moving in building on mezzanine



▶▶ SMC SITE PHOTOS



Complete installation of wall tile, cafeteria cabinets and countertops in the cafeteria/lounge area



Install interior signage throughout the building

▶▶ SMC SITE PHOTOS



Complete striping of north parking lot

▶▶ SMC SITE PHOTOS



Complete installation of moss wall in the cafeteria/lounge area



Install lockers in south side locker rooms

▶▶ SMC SITE PHOTOS



Install operable partition in cafeteria/lounge area



Construction begins on bump out building and is moving towards completion in December

▶▶ SMC SITE PHOTOS



Complete tiling restrooms throughout the building



Reception sign installation begins in vestibule



Complete exterior landscaping at the front parking lot



WHAT TO EXPECT IN DECEMBER



Complete punch list items for interior finishes



Complete construction of bump out building



Continued furniture installation on mezzanine and first floor



Complete installation of lockers in north locker room and interior door signage



Testing and starting up equipment



Substantial Completion: December 16, 2020



HPCDC CONSTRUCTION STATUS UPDATE

- ▶ Completed glass install
- ▶ Completed Monument stair steel install
- ▶ Completed installation of area wells
- ▶ Completed site utilities
- ▶ Completed asphalt binder
- ▶ Continued overhead MEP rough-in on throughout the building
- ▶ Continued MEP equipment install
- ▶ Continued gasketing & caulking
- ▶ Continued wall framing on 1st & 2nd Floor
- ▶ Continued drywall on 1st & 2nd floor
- ▶ Started site lighting



▶▶ HPCDC SITE PHOTOS



Data Center Structure – West View



Data Center Structure – North view

▶▶ HPCDC SITE PHOTOS



Southeast Area Well



Southwest Area Well

▶▶ HPCDC SITE PHOTOS



NOC Wall Framing



Second Floor Passageway



Monument Stair & Green Wall



WHAT TO EXPECT IN DECEMBER



Complete gasketing & caulking of glass



Complete site grading



Complete curbs & gutter



Continue drywall throughout the building



Start interior finishes



Start vestibule curtain wall



Start third floor rough-in

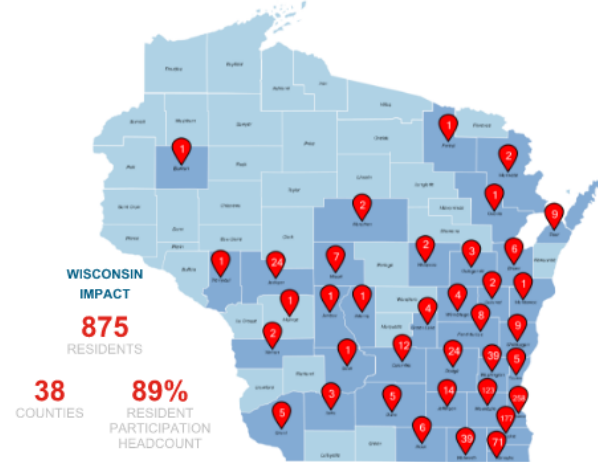


WISCONSIN FIRST AND RACINE COUNTY ECONOMIC INCLUSION & DIVERSITY RESULTS

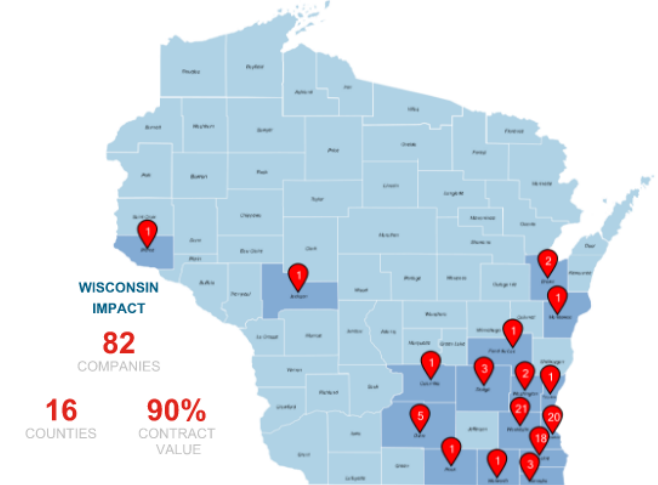
Business Contracting and Inclusion Goals	
Wisconsin based Businesses	60%
Racine County based Businesses	10%
Minority-Owned (MBE) Business Enterprises	10% Combined
Woman-Owned (WBE) Enterprises	
Veteran-Owned Business Enterprises	

Workforce Inclusion and Diversity Goals	
Wisconsin Resident Work Hours with an emphasis on Racine County Residents	70%
Minorities or People of Color*	10% Combined
Women	
Veterans	

WISCONSIN FIRST **Resident Inclusion** (as of 11/30/2020)
Participating Fii Projects - SMC & HPCDC



WISCONSIN FIRST **Business Inclusion** (as of 11/30/2020)
Participating Fii Projects - SMC & HPCDC



An aerial photograph of a large industrial building under construction, featuring a flat roof with numerous skylights and a concrete foundation. The surrounding area includes parking lots, roads, and open fields. In the distance, wind turbines and a residential area are visible. The entire image has a green color overlay.

LET'S REDEFINE POSSIBLE



Status Update

Foxconn's Industrial Construction Work in Area 1
Wisconn Valley Science & Technology Park

December 2020





Program and Professional Construction Manager – SIO Projects

SIO Projects Update

December 2020



Construction Status Update

- The following has been turned over to SIO and is under Foxconn management:
 - Area 1 land including all grounds, roadways & utilities
 - except limited areas required to complete Fab Phase 1 work
 - Fab Phase 0
 - PSS
- Remaining construction still ongoing:
 - Fab Phase 1

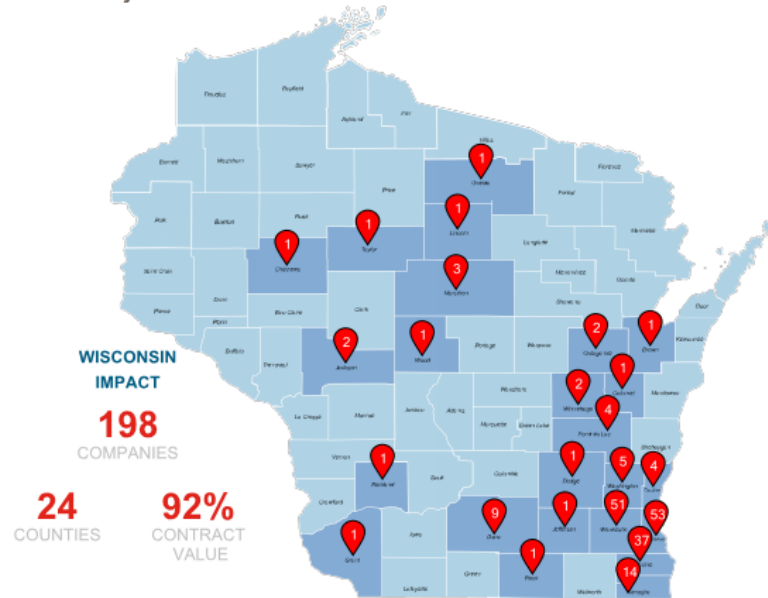


Wisconsin First and Racine County Economic Inclusion & Diversity Results — All SIO Projects Combined

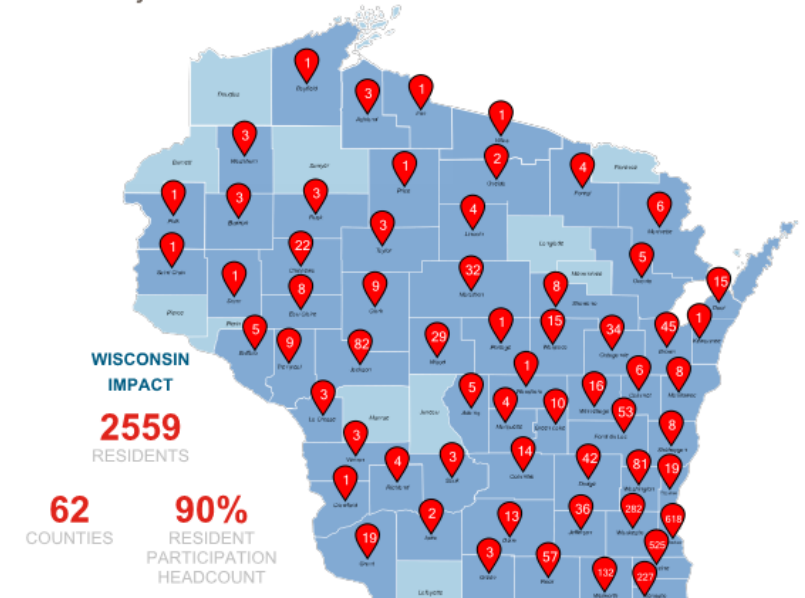
Business Contracting and Inclusion Goals	
Wisconsin based Businesses	60%
Racine County based Businesses	10%
Minority-Owned (MBE) Business Enterprises	10% Combined
Woman-Owned (WBE) Enterprises	
Veteran-Owned Business Enterprises	

Workforce Inclusion and Diversity Goals	
Wisconsin Resident Work Hours with an emphasis on Racine County Residents	70%
Minorities or People of Color*	10% Combined
Women	
Veterans	

WISCONSIN FIRST Business Inclusion (as of 10/31/2020*)
SIO Projects



WISCONSIN FIRST Resident Inclusion (as of 10/31/2020*)
SIO Projects



Gilbane|Exyte will deploy best efforts through robust outreach, procurement and construction practices to achieve the goals for the construction projects awarded for their work in the Science and Technology Park.



Site Photos

Fab
North Façade
(Phase 0)



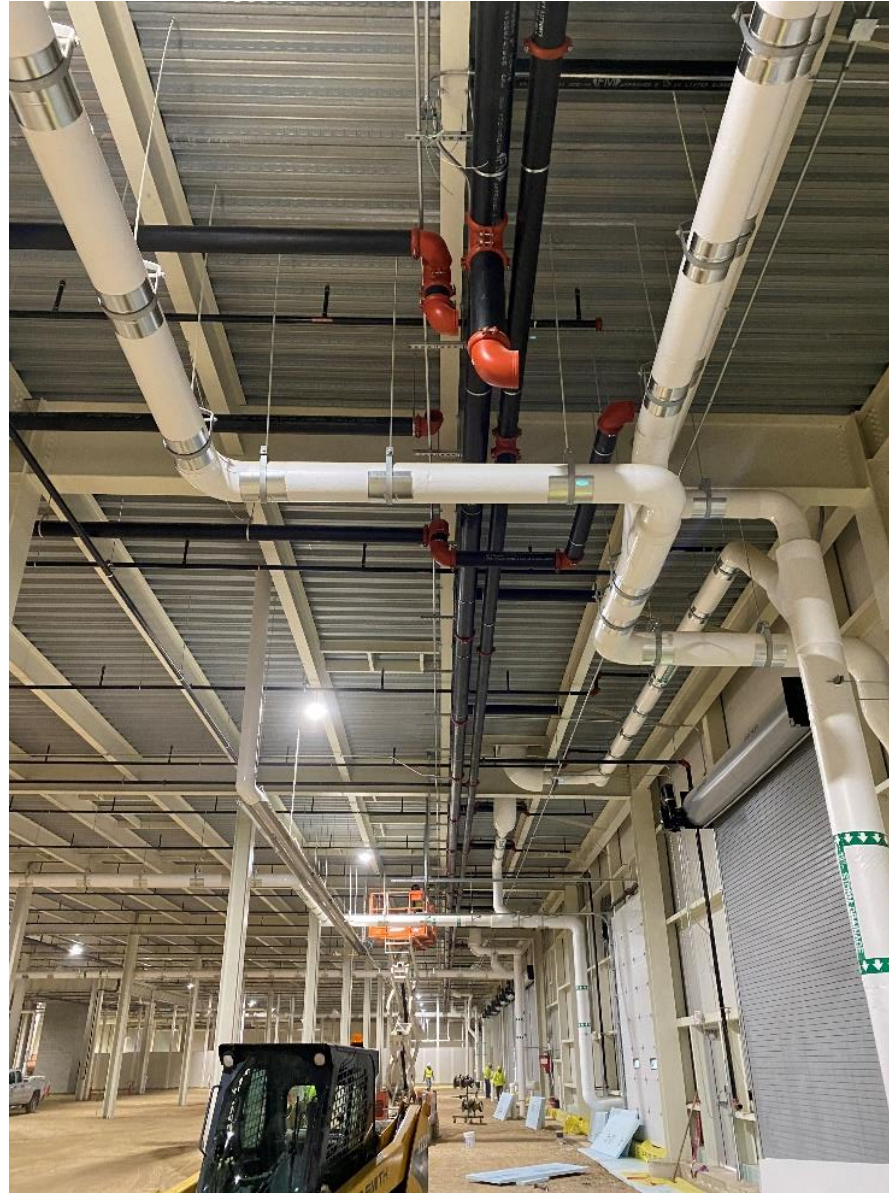
Site Photos

PSS
Aerial



Site Photos

Fab Phase 1
Conduit Install



Site Photos

Fab Phase 1
Fire Sprinkler Install



Site Photos

Fab Phase 1
Slab Prep

Stay Informed

Wisconnvalley.wi.gov

Primary site for contractors to engage with public infrastructure and building construction.

WISCONSIN.GOV Agency Directory Online Services

Wisconn Valley Foxconn in Wisconsin

PROJECT OVERVIEW SUPPLY CHAIN BIZ OPPORTUNITY NEWS/EVENTS FOXCONN IMPACT CONTACT US

Search Foxconn in Wisconsin

Wisconsin Wins \$10 Billion Foxconn Investment

In 2017 Wisconsin's workforce and business climate went toe to toe with other states to compete for 13,000 new jobs and \$10 billion of capital investment from Foxconn's new state-of-the-art advanced manufacturing campus. Wisconsin won! It's estimated that this project will add \$51 billion to Wisconsin's gross domestic product over 15 years, an economic impact of \$18 returned for every \$1 invested by the state.

Construction Updates

Project Construction Foxconn Impact Wisconn Valley News

The second round of general information sessions for contractors were held for the Wisconn Valley Science and Technology Research Park.

Check out the statewide impact Foxconn is having on workers, businesses, and communities throughout Wisconsin on the Foxconn Impact page.

Local elected officials, suppliers, contractors and members of the public are encouraged to turn to the Wisconn Valley News for the latest project status, road updates, next steps, and interesting facts.